

---



# The Future of Athletic Training Accreditation



Commission on Accreditation  
of Athletic Training Education

---



Effective July 1, 2006

Commission on Accreditation of  
Athletic Training Education  
(CAATE) will be the recognized  
accrediting agency for Athletic  
Training education programs



---

# CAATE: Vision

- To be a leader in specialized accreditation of health care professions



---

# CAATE: Mission

- To provide accreditation services to institutions that house Athletic Training degree programs and verify that all accredited programs meet and maintain the minimum acceptable educational standards for professional (entry-level) education



---

# CAATE: Goals

- Site visit and annual processes are defined, consistent, and free of personal biases, conflicts of interest and non-sanctioned interpretations with respect for institutional autonomy



---

# CAATE: Goals

- Accreditation decisions are defined, consistent, and free of personal biases, conflicts of interest and non-sanctioned interpretations with respect for institutional autonomy



---

# CAATE: Goals

- Regular and consistent assessment quality assurance processes
- Maintain collegial relationships and regular communication with the institutions and other stakeholders



---

# CAATE: Goals

- Oversee and provide educational opportunities related to program development and accreditation
- Develop and protect financial resources consistent with the needs and goals of the CAATE
- Develop, promote, and maintain relationships with sponsoring organizations



# Functions of Accreditation

Department of Education Website ([www.ed.gov/admins/finaid/accred/accreditation\\_pg2.html](http://www.ed.gov/admins/finaid/accred/accreditation_pg2.html))

- ❑ Verify that a program meets established standards
- ❑ Assist prospective students in identifying acceptable (i.e. meet standards) institutions
- ❑ Assist institutions in determining potentially acceptable transfer credits
- ❑ Protect an institution against harmful internal and external pressure

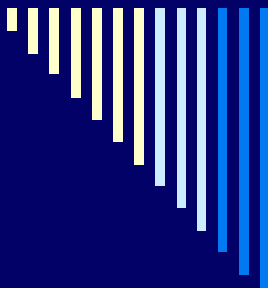


---

# Functions of Accreditation

Department of Education Website ([www.ed.gov/admins/finaid/accred/accreditation\\_pg2.html](http://www.ed.gov/admins/finaid/accred/accreditation_pg2.html))

- ❑ Create goals for self-improvement of weaker programs and stimulating a general raising of standards among educational institutions
- ❑ Involve faculty and staff comprehensively in program evaluation and planning
- ❑ Establish criteria for professional certification and licensure and for upgrading programs offering such preparation

- 
- 
- It is the Commission's plan to involve many more ATCs and AT Educators in the process of review and accreditation of Athletic Training Education programs, because better representation yields better results.

Your assistance and support of these efforts  
**IS ESSENTIAL** to CAATE'S success!!!



# Current CAAHEP Accreditation Process

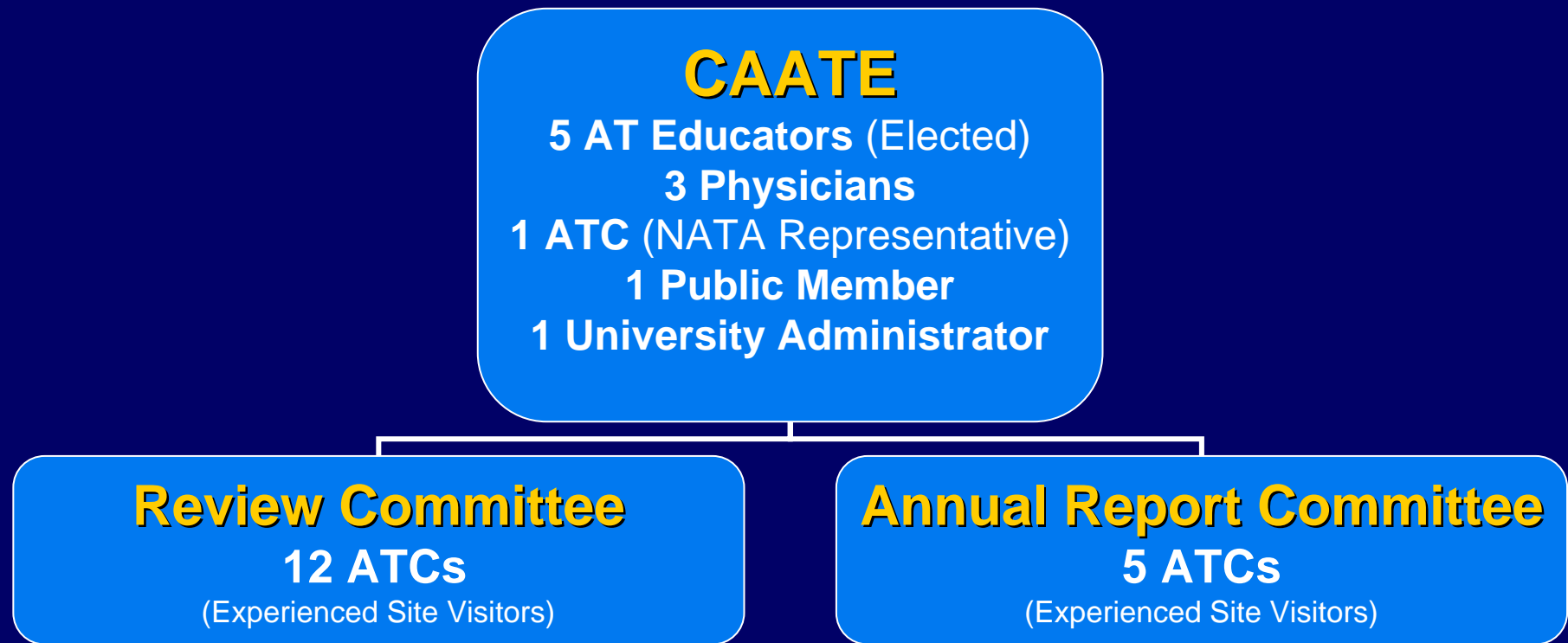
**CAAHEP**  
14 non-ATCs

**JRC-AT**  
7 ATCs  
3 MDs

**JRC-AT Annual Report Committee**  
5 ATCs



# NEW CAATE Accreditation Structure

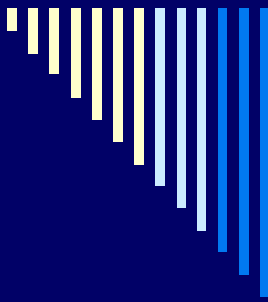




# Other CAATE Committees

- Nominating Committee
  - 2 current Commissioners
  - 2 past Commissioners/Committee Members
  - 1 current Program Director
  - 1 current Site Visitor
- Site Visit Committee
  - 5-6 Experienced Site Visitors
- Finance Committee
- Ethics & Professional Standards Committee
- Ad-Hoc Committees
  - Appeal Committee

---



How does this transition  
to CAATE impact you  
and your ATEP?



---

# CAATE: Programmatic Impact

- **All currently accredited ATEPs will be recognized by CAATE on July 1, 2006.**
  - All CAAHEP timeframes, accreditation status, and actions will be the same under CAATE.
  - All accredited ATEPs will receive CAATE Accreditation Certificates.
  - The BOC will recognize all CAATE-accredited program graduates for the BOC examination.



# CAATE: Programmatic Impact

- **February 2006**

- JRC-AT Annual Program Fee \$ 600

- **July 2006\***

- CAATE Institution Fee \$ 450

□ **After July 1, total fees will remain the same, but now will be paid one time directly to CAATE.**

- **February 2007**

- CAATE Annual Program Fee & Institution Fee  
\$1050



---

# CAATE: Programmatic Impact

- **CAATE Accreditation Standards will be implemented effective with 2006-07 site visits.**

HOWEVER, being currently accredited means that all ATEPs should be in compliance with CAATE Standards effective July 1, 2006.

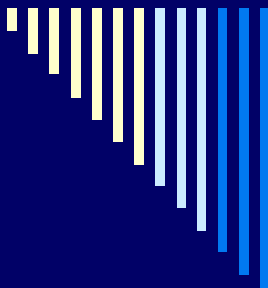
Evaluated via Comprehensive Review Process (Self-Study/Site Visit) and Annual Report.



---

# CAATE: Programmatic Impact

- **There will be no “Interpretation Manual” necessary, as all interpretations have been included in the CAATE Standards.**
  - **There is a comparison document on the JRC-AT website ([www.jrc-at.org](http://www.jrc-at.org)) that compares the CAAHEP (current) Standards with the CAATE Standards.**



# Special Note: “Major” Standard (Section I)

## I. Curriculum & Instruction

I1. Description of the Program - The athletic training education program must be an undergraduate or graduate program that offers a major or graduate equivalent in athletic training. The undergraduate major or graduate major equivalent must be:

**I1.1** consistent with other majors offered within the **institution**,

**I1.2** identified as an academic athletic training major program **in institutional academic publications**, and

**I1.3** indicated **on the official transcript of the student** as is normally designated for other undergraduate majors or graduate major equivalents at the institution.



---

# CAATE: Programmatic Impact

- **Monitoring of CI and ACI training will be done by CAATE.**
  - **This information will be part of the accreditation review process (Comprehensive Review or Annual Report).**
  - **No longer need to send in copies of rosters from ACI Training.**



---

# CAATE: Programmatic Impact

- **Site Visitor Training will be new and improved.**
  - **Potential Site Visitors will be required to first pass an on-line test of their knowledge and understanding of the Standards before being invited to participate in Site Visitor training.**
  - **Quality assurance processes will be a regular part of Site Visitor review.**
  - **Site Visitors will receive more regular feedback on their performance.**



# How can you get involved??

□ We're looking for a few good men/women.....

■ **Experienced Site Visitors**

- Review Committee
- Site Visitor Committee

■ **New Site Visitors (after July 2006)**

■ **Program Directors**

- Nominating Committee

■ **Recommendations for Public Member**

■ **Administrators (either self-nominated or recommended by an ATC/AT Educator)**

■ **Ad Hoc Committees (will be announced)**



# JRC-AT Updates

- **Candidacy will no longer be a service offered to new programs by the JRC-AT.**
  - Option #1: Any program that is currently recognized as officially pursuing Candidacy may continue with the Candidacy review process as scheduled.
  - Option #2: An institution may choose not to continue its pursuit of Candidacy and prepare for the CAATE comprehensive accreditation review process on its own.
- Newly forming academic programs will be able to access, on the JRC-AT/CAATE website, self-guided check lists and procedures to facilitate their development. The JRC-AT/CAATE will not provide review of documents or other consulting services for these developing programs.



# JRC-AT Updates

**The 4th edition of the NATA Competencies will be implemented with the Fall 2007-08 site visits.**

- Accredited programs are encouraged to adopt the competencies as soon as possible, because the “new” items are already components of NATA position statements and, therefore, potential content areas for the BOC examination,
- All accredited ATEPs will be required to have implemented and used the 4th edition of the NATA Competencies and the associated tracking tool beginning in the Fall of 2007. This implementation may be validated via the Annual Report **AND/OR** a comprehensive review (self-study and site visit) during the 2007/2008 academic year.



---

□ Thanks!

- All correspondence and communication should be through the JRC-AT Office

**JRC-AT**

**P.O. Box 460939**

**Centennial, CO 80046-0939**

**(303)627-6229**